

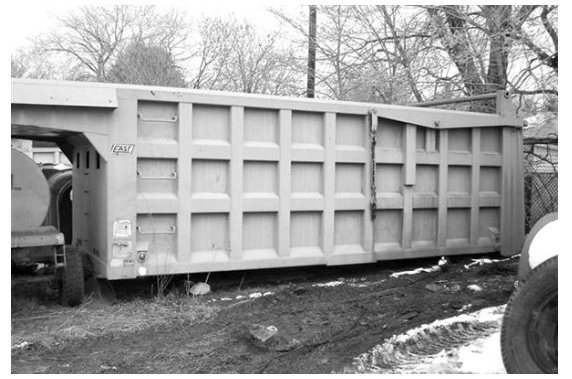
OCTOBER FEATURED CLASSIFIEDS



Alum. & steel beds at a fraction of new!
 (1) Dump trlr., some tractors left, retiring
 after 60 years of trucking.
 (304) 457-1695



'19 Reitnauer Bigger Bubba 53' step
 w/3-axle back, 2-lift, 17.5 tires, (2) tool
 boxes, asking \$58,000.
 (419) 603-2502



(2) East 20' extremely heavy duty, 72"
 sides w/liftgate, body only
 (2) Steel 18' demo w/swg. gate
 (2) East alum. 18', good cond.
 (216) 441-3070



'08 KW roll-off tri-axle truck, ISM Cum.,
 385 hp, Jake, 8LL trans., 20F, locking 46R,
 RDK 60,000 lb. hoist w/tarper, 250,000
 miles, \$56,000, located approx. 10-12
 miles from I-77 @ our pre-owned lot,
 Eagle Equip. Co. @ Willow Island on St.
 Rt. 2 across from Summit Environmental
 or 7 miles south of St. Marys, WV.
 (304) 665-2432
 Cell (304) 299-1169

'03 Sterling tdm., Cum. 225 hp, 8LL, 14'
 dump bed, 75,000 actual miles, needs
 tires & batteries, \$19,750 or best offer
 '88 Chevy tdm., Cat motor, 10 spd., 14'
 dump bed, 125,000 miles, \$10,750 or
 best offer
 Trojan Model 2000 whl. ldr., (2) new tires,
 2-yd. bucket, V8 dsl., gauges/brakes
 work, \$11,000 or best offer
 (330) 637-9947

General construction equipment, back-
 hoes, trenchers, trucks, light boards,
 directional drill equipment.
 (330) 352-8053

'90 Ford Super Duty flatbed, new 11' flat-
 bed, new trans. & motor, \$2,500
 Several LTL9000 tractors, some heavy
 spec'd & some highway spec'd
 (304) 669-1141

Coming Soon: '86 Summit 39' frameless
 tdm. axle, 96" wide, 60" high, good 24.5
 tires & brakes, grain door, 4-way gate,
 plastic floor & tarp, \$13,000.
 (989) 550-0644

Cum. 855 motor parts w/(6) 855 heads or
 injectors, many parts for 855
 Set of 292 rblt. steering boxes, complete
 w/steering arms or 8300 Series Int'l.
 Numerous Int'l. parts
 (937) 605-3597